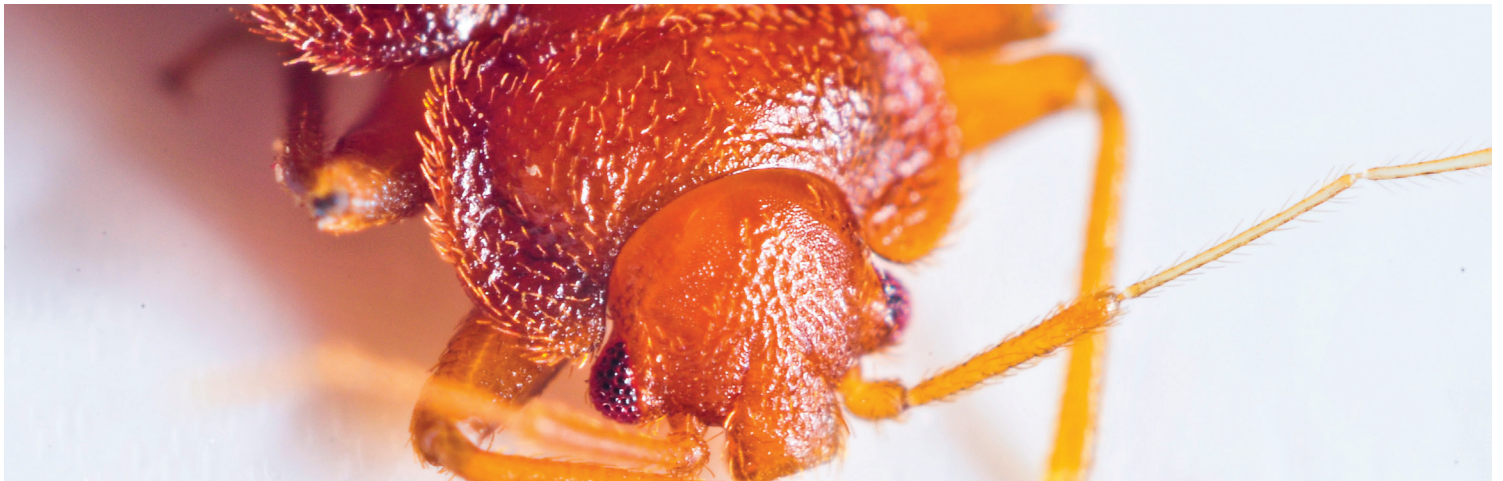


**Vikane**<sup>®</sup>

## ELIMINATING BED BUGS

SPECIALTY GAS FUMIGANT



### Facts You Need to Know About Bed Bugs

**What do bed bugs look like?** Adults of the common bed bug (*Cimex lectularius*) are about 1/4 inch long, reddish to dark brown in color with flattened bodies (see photo). They cannot fly, but can run quickly. Eggs and newly hatched nymphs are pale and very tiny — the size of a pin head.

**How do bed bugs spread?** Bed bugs spread easily by “hitchhiking” on all types of household and personal items, including clothing, bedding, furniture, luggage, wheelchairs, purses, wallets, backpacks, and animal cages. Although bed bugs prefer to infest wood and fabric to metal and plastic surfaces, they have been found infesting electronic devices, such as tablet PCs, and even hollow perches in bird cages.

**What do bed bugs feed on?** The common bed bug prefers to feed on humans, but can feed on a wide range of warm-blooded animals, including cats, dogs, birds, rabbits, and rodents. Bed bugs do not stay on the host. They move from hiding places in bedding, furniture, cages and other nearby cracks and crevices to feed briefly on people and pets at night. Adults can live for at least several months without a blood meal.

**What are signs of infestations by bed bugs?** Look for the following:

- Red, welt-like bites that itch and occur while sleeping (bed bugs feed at night).
- Live bed bugs, eggs, molted skins of bed bugs, and dark brown or black spots (excrement).
- Bed bugs hide and lay eggs in household and personal items, including mattress seams, box springs, bedding, headboards, picture frames, sofas, furniture, carpeting, drapes, electronics, and any crack and crevice the width of a business card.



Photo courtesy of University of Florida, IFAS



Photo courtesy of M. Potter, Univ. of KY

**See reverse for important checklist information on how to prepare for a bed bug fumigation.**

## Packing Checklist — How to Leave the Bed Bugs Behind

- Bring as few items as possible when leaving the residence for the fumigation.** Remember, bed bugs hitchhiking in suitcases, backpacks, boxes, clothing, bedding and pest cages is a common way for these insects to be introduced into buildings. Bed bugs have been found infesting small electronic devices, such as cell phones and tablet PCs.
- For all fabric items that will be taken out of the residence before the fumigation, wash in hot (140° F) water in clothes washer, dry in tumble clothes dryer set on “hot” setting for 30 minutes, or dry clean items before returning them to the fumigated residence.** Fabric items include clothing, blankets, pillows, stuffed toys, and pet bedding. Washing or drying items in high temperatures or dry cleaning is required to kill all life stages, including eggs, of bed bugs.
- Do not use boxes, purses, suitcases, backpacks, gym bags, or any similar items from the infested residence to pack belongings.** These items should remain in the residence to be fumigated. Pack belongings needed during the fumigation in light colored or clear plastic bags or plastic containers, such as sweater boxes or new luggage not previously stored in the infested residence.
- Do not place washed or packed items on furniture (beds, sofas, dressers, tables, etc.) or flooring (carpets or rugs) that may be infested with bed bugs.** Immediately remove packed items from the infested residence or place them on a clean, hard surface (kitchen or bathroom floor, in a bath tub or shower) until they can be removed from the residence.
- Mattresses and pillow completely enveloped in waterproof coverings can be fumigated if the waterproof covering can be opened or contain built-in vents designed to permit air passage.** Otherwise, mattresses and pillows completely enveloped in waterproof coverings must be removed prior to fumigation. It is advised that any removed mattress or pillow be discarded, or be covered by a bed bug encasement before being returned to the residence after fumigation. (Waterbeds can be fumigated.)
- Pet cages, pet bedding, fabric toys, clothing, retractable leashes and other pet items which can harbor bed bugs should be fumigated.** Pet cages with any small gaps, seams, or hollow spaces that could harbor bed bugs should be left in the residence to be fumigated. Food in cages should be removed prior to the fumigation. The pets should be transferred to new travel cages or housing known not to be infested with bed bugs to remove them from the residence prior to the fumigation. Pet bedding, fabric toys, and clothing should not be removed from the residence before the fumigation unless these items can be washed, dried, or dry cleaned as described above.
- Personal mobility devices, such as wheelchairs, walker, baby strollers, child car seats, and cars, can be infested with bed bugs and should be fumigated.** These items can be fumigated as part of the residential fumigation if absolutely needed to vacate the residence during its fumigation. Talk to your pest control professional to coordinate treatment of these items.



Solutions for the Growing World



®Trademark of The Dow Chemical Company (“Dow”) or an affiliated company of Dow  
 Vikane is a federally Restricted Use Pesticide.  
 Always read and follow label directions.

These materials have been created specifically for Vikane gas fumigant and no other structural fumigant. These materials may not be copied, in whole or in part, or reproduced without the permission of Dow AgroSciences.  
 U01-069-155 (10/13) DAS 010-70636